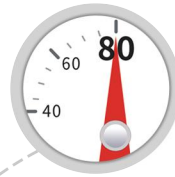




EC-38A

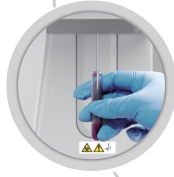
Auto Hematology Analyzer



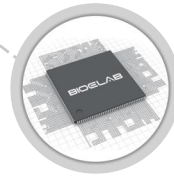
■ Throughput up to 80 samples/hour with whole blood mode



■ 10.4 inch color display screen with touch panel



■ Minimum volume 9µL whole blood



■ Large storage capacity, 500,000 results

Technical Specifications

Principles

Impedance method (WBC, RBC, PLT) and cyanide free colorimetric method (HGB)

Parameters

24 parameters: (WBC, Lym#, Mid#, Gran#, Lym%, Mid%, Gran%, RBC, HCT, MCV, MCH, MCHC, RDW-CV, RDW-SD, PLT, MPV, PDW-CV, PDW-SD, PCT, HGB, PLCC, PLCR, NLR, PLR), 3 histograms

Reagent

1 diluent and 1 lyse reagent

Performance

Parameter	Linearity Range	Repeatability	Carryover
WBC	0-300*10 ⁹ /L	2%(7-15*10 ⁹ /L)	0.5%
RBC	0-8*10 ¹² /L	1.5%(3.5-6.5*10 ¹² /L)	0.5%
PLT	0-4000*10 ⁹ /L	4%(150-500*10 ⁹ /L)	1%
HGB	0-280g/L	1.5%(100-180g/L)	0.5%

Sample Volume

Minimum volume 9µL whole blood

Throughput

80 samples per hour

Display

10.4 inch TFT Touch Screen

Multi-language

English, Option: Chinese, Portuguese, Spanish, Russian, French

Data Storage Capacity

Up to 500,000 results including numeric and graphic

Communication

LAN port supports HL7 protocol

Interface

4 USB ports, 1 LAN port

Printout

Built-in thermal printer;
Support directly connected with more than 15 types USB HP printers;
Support different language when leaving the factory;
Multiple built-in report templates available;

Operating Environment

Temperature: 10 C -35 C
Humidity: 20%-85%

Power requirement

100-240VAC, 50/60Hz, 150VA

Dimension

420mm(L)*295mm(W)*430mm(H)

Net Weight

≤28kg

BIOELAB

E-LAB Biological Science & Technology Co.,Ltd.

Add: Building 9, No.1 Kechuang Road, YaohuaStreet, Qixia District, Nanjing City, Jiangsu Province, 210046, China

Tel: 086-025-83269256

Fax: 086-025-83269255

Web: www.bioelab.net

E-mail: info@bioelab.net



The customer service hot line

400-018-6818